



HDRC[®]-G Digital Camera with Global Shutter

- Distortion-Free Image Capture
- Synchronization with pulsed LED illumination (optional)

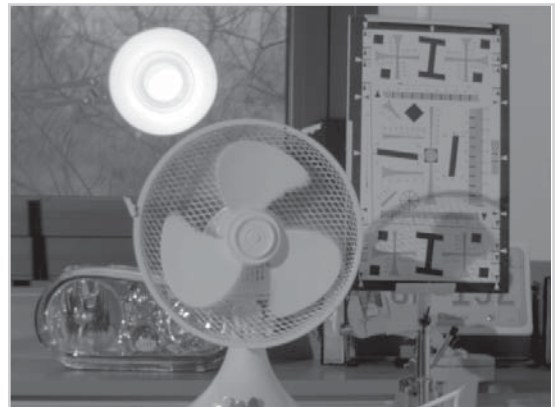
| | |
|--------------------------|--|
| Sensor | HDRC [®] -G2 CMOS Sensor with Global Shutter |
| Resolution | 772 x 507 Pixel |
| Sensor Dynamic Range | > 130 dB with Logarithmic Response |
| Frame Rate | 30 Frames /s |
| Region of Interest | Fully adjustable ROI for higher frame rate e.g. 1000 Frames /s @ 100 x 100 Pixel |
| Digital Output Interface | 10/12 Bits CameraLink |

High Dynamic Range Scene: Rotating Fan at 3000 rpm

HDRC[®] VGAX Sensor with Rolling Shutter

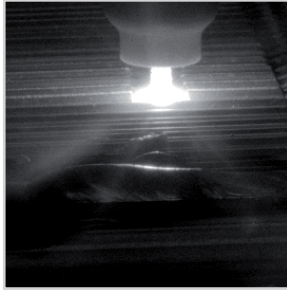


HDRC[®]-G2 Sensor with Global Shutter

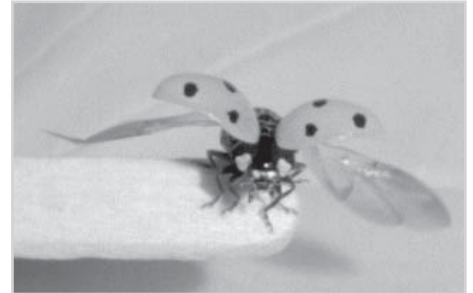


HDRC®-G Digital Camera with Global Shutter

Applications



- Welding Applications
- Machine Vision with high speed Objects
- Traffic Control
- Stroboscopy
- Pulsed LED Systems



Order Information

Experimental Camera System (HDRC® MDC05_CL.G b/w) **including Digital Camera** (HDRC® VGAD.G CL)

- HDRC®-G2 b/w Global Shutter Sensor, Resolution 772 x 507 Pixel
- Sensor Dynamic Range >130 dB
- Sensor and Controller Module
- CameraLink Interface
- Rugged Camera Housing for C-Mount
- Lens f 1.4 / 16 mm
- Digital CameraLink Frame Grabber Eltec p3i_CL
- CameraLink Cable
- Camera Power Supply (100-240 V AC, 5 V DC)
- IP3 Control Software for Image Acquisition and Camera Control
- Supports Eltec p3i_CL CameraLink Frame Grabber
Systems Requirements: Windows XP, Pentium III or higher

Price 3,932 €

Digital Camera (HDRC® VGAD.G CL b/w) **with CameraLink Interface**

- HDRC®-G2 b/w Global Shutter Sensor, Resolution 772 x 507 Pixel
- Sensor Dynamic Range >130 dB
- Sensor and Controller Module
- CameraLink Interface
- Rugged Camera Housing for C-Mount
- Lens f 1.4/16 mm
- Camera Power Supply (100-240 V AC, 5 V DC)

Price 1,990 €

Prices are subject to change. Technical features are subject to change without notice due to technological progress. Please request a firm quote.